

Tenda



TC3B24C

4MP Smart Full-Color Bullet Camera



TC3B24C

4MP Smart Full-Color Bullet Camera

Product Introduction

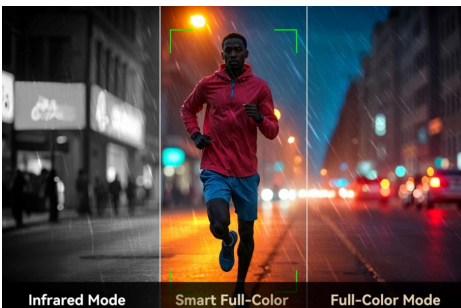
Tenda 4MP Smart Full-Color Bullet Camera TC3B24C is a high-performance surveillance device. It features dual-light full-color night vision, vehicle and human detection, line-crossing and intrusion detection for smart surveillance. Supporting PoE and DC power supply, along with IP67 waterproof protection and a durable metal body, it ensures stable and secure operation under all harsh weather conditions. With ONVIF protocol compatibility, it seamlessly integrates with NVRs from different brands to build a comprehensive surveillance system. Ideal for factories, car parks, communities, parks, and schools.

Product Features



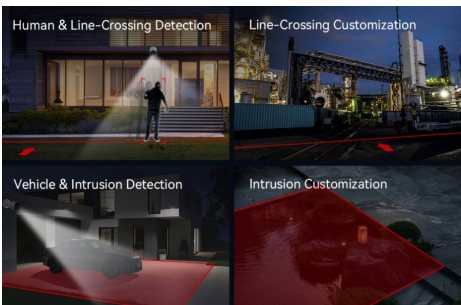
Exceptional 4Mp Super HD

Boasting a high resolution of 2560*1440, the security IP camera can capture crystal clear videos with fine details. With the Smart Reference Frame video encoding technology further reduces the bitrate by 30%+.



Enhanced Night vision

Advanced ISP algorithms, Smart Hybrid Light, F1.6 Lens, provide superior night vision capabilities, and always sharply-focused images.



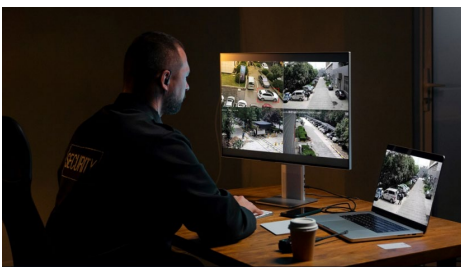
Multiple Intelligent Detection

Built-in advanced deep learning algorithms offer Human, Vehicle detection, Line-Crossing Detection, Intrusion Detection. Higher detection accuracy and effective reduction of false alarms caused by changes in lighting and environment.



IP67 Waterproof for Outdoor Use

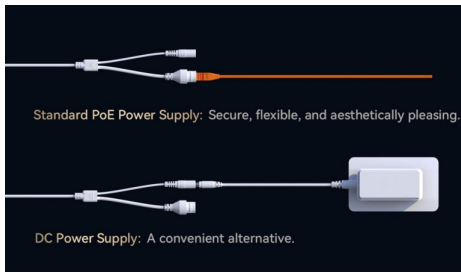
The rugged housing and body make the IP camera waterproof. It works perfectly both inside and outside your house, in any harsh weather conditions.



Synchronized Video and Audio Capture

Built-in microphone, can picks up ambient sound for an extra layer of security.

Product Features



PoE - Faster Installation with Less Effort

A single cable to transmit both data and power. Simplified wiring means easier and clean installation. The furthest transmission distance can reach over 200 meters.



ONVIF Protocol Makes Integration Simpler

Compatible with Tenda NVR, it supports one-click addition and plug-and-play. It also supports ONVIF protocol, ensuring compatibility with mainstream NVR for enhanced functionality.



Flexibly Build a Surveillance System

Pair with Tenda network equipment to effortlessly build ultra-clear monitoring systems for shops, factories, offices, parks, and more. The system is highly versatile, flexible, and scalable.

Specification

Camera	
Image Sensor	1/3" Progressive Scan CMOS sensor
Min. Illumination	/
Day & Night	ICR type
Bracket Angle Adjustment	Pan: 0° ~ 360° , Tilt: 0° ~ 90° , Rotation: 0° ~ 360°
Lens	
Focal Length	4mm / 6mm
Aperture	F1.6
FOV	Horizontal FOV(4mm): 79.1°, Vertical FOV: 43.3°, Diagonal FOV: 94.9° Horizontal FOV(6mm): 49.9°, Vertical FOV: 27.7°, Diagonal FOV: 57.6°
Illuminator	
Supplementary Light	2 infrared and white light combined illuminators
Supplementary Light Distance	Up to 30 m/100 ft (depending on environment)
IR Wavelength	850nm
Night Vision Mode	Smart Mode, Full Color Mode, Black & White Mode
Video	
Video Encoding Format	H.265+, H.265, H.264
Main Stream Resolution	2560 x 1440, 2304 x 1296, 1920 x 1080, 1280 x 720
Sub Stream Resolution	640 × 360, 352 × 288
Frame Rate	PAL: 1-25fps, Default 25fps, NTSC: 1-30fps, Default 30fps
Bit Rate	512kbps -- 4096kbps
Bit Rate Control	CBR,VBR
Audio	
Audio Encoding Format	G.711A, G.711U, AAC
Audio Sampling Rate	8 kHz

Specification

Image	
Image Enhancement	DWDR, BLC, HLC, 3D DNR
Privacy Mask	4 Areas
Network	
Ethernet Port	1 RJ45, 10Mbps/100Mbps auto-negotiation Ethernet port
ONVIF	Support
Protocols	TCP/IP, UDP, ICMP, HTTP, DHCP, DNS, DDNS, RTP, RTSP, RTCP, NTP, ARP
Web Browser	Plug-in free live view: Chrome, Edge, Opera
Alarm	
Smart Detection	Motion Detection, Human Detection, Vehicle Detection, Line Crossing Detection, Intrusion Detection
Interface	
Audio Input	Built-in MIC
General	
Power	12 V DC, 1A, Ø5.5mm&Ø2.1mm Power Plug POE: IEEE 802.3af
Material	Metal
Product Dimension	66mm x 66mm x 130mm (2.61" x 2.61" x 5.12")
Package Dimension	180mm x 105mm x 107mm(7.1" x 4.1" x 4.2")
Product Weight	324g(0.71lb)
With Package Weight	443g(0.98lb)
Protection Level	IP67
General	
Installation Method	Wall Mounting, Ceiling Mounting, Pole Mounting (Additional Bracket is Required)
Certification	CE, FCC,RoHS
Temperature	Operating Temperature: -40°C ~ 60°C (-40°F ~ 140°F) Storage Temperature: -40°C ~ 70°C (-40°F ~ 158°F)
Humidity	Operating Humidity: 10% ~ 95% RH (non-condensing) Storage Humidity: 3% ~ 95% RH (non-condensing)

Specification

General	
Package Contents	Camera Waterproof Kit Installation Template Mounting Accessories Kit Quick Installation Guide

SHENZHEN TENDA TECHNOLOGY CO.,LTD.

Tenda Technology Bldg.Int'l E-City,
#1001 Zhong Shan Yuan Rd.,Nanshan District,She nzhen China.

E-mail:support@ tenda.com.cn

Tel:+86-755-2765 7098

Fax:+86-755- 2765 7178

